

## Rotherham Children and Young People's Services

# Assessment of Performance by Every Child Matters Outcome

### 2010/11 Quarter Two Report

This report outlines performance at the end of 2010/11 Quarter Two against targets, with comparisons against previous performance and statistical neighbour and national data where possible.

It should be read in conjunction with the 'CYPS Performance Monitoring Table – 2010/11 Quarter Two (Appendix B) as it includes references throughout the text to the numbering structure within the table.

Please note the following data health warnings;

- Comparative data relates to the latest available data and therefore date periods for some indicators may vary. It has been sourced via the DFE Local Area Interactive Tool.

## Performance Summary – All themes

Number of Indicators: 32

Number of Components: 38

The tables below shows performance data by Every Child Matters outcomes. These are abbreviated as follows;

BH = Being Healthy      SS = Staying Safe  
MPC = Making a Positive Contribution

EA = Enjoying & Achieving  
AEW = Achieving Economic Wellbeing

### Performance against Targets (Comparing this quarter's performance against set targets)

On Target	Interpretation	BH		SS		EA		MPC		AEW		All	
		No	%	No	%	No	%	No	%	No	%	No	%
✓	Has met target	2	50%	6	67%	6	40%	2	29%	2	67%	18	47%
✗	Has not met target	2	50%	3	33%	7	47%	4	57%	1	33%	17	45%
- / n/a	No targets set (ie new and/or baseline yr)	0	0%	0	0%	2	13%	1	14%	0	0%	3	8%
<b>Total Number of Indicators</b>		<b>2</b>		<b>9</b>		<b>13</b>		<b>5</b>		<b>3</b>		<b>32</b>	
<b>Total Number of Components</b>		<b>4</b>		<b>9</b>		<b>15</b>		<b>7</b>		<b>3</b>		<b>38</b>	

### Direction of Travel "DOT"

DOT	Interpretation	BH		SS		EA		MPC		AEW		All	
		No	%	No	%	No	%	No	%	No	%	No	%
↑	Top performance or improvement	1	25%	4	44%	10	67%	4	57%	1	33%	20	53%
→	Performance has maintained	0	0%	1	11%	2	13%	0	0%	1	33%	4	11%
↓	Performance has declined	3	75%	4	44%	2	13%	2	29%	1	33%	12	32%
- / n/a	No comparison can be made	0	0%	0	0%	1	7%	1	14%	0	0%	2	5%
<b>Total Number of Indicators</b>		<b>2</b>		<b>9</b>		<b>13</b>		<b>5</b>		<b>3</b>		<b>32</b>	
<b>Total Number of Components</b>		<b>4</b>		<b>9</b>		<b>15</b>		<b>7</b>		<b>3</b>		<b>38</b>	

## Year to Date Performance “YTD”

Outturn Perf.	Interpretation	BH		SS		EA		MPC		AEW		All	
		No	%	No	%	No	%	No	%	No	%	No	%
★	2% above target or top performance	2	50%	4	44%	5	33%	2	29%	2	67%	15	39%
●	On target	0	0%	2	22%	1	7%	0	0%	0	0%	3	8%
▲	Below target	2	50%	3	33%	7	47%	4	57%	1	33%	17	45%
- / n/a	No targets set ( <i>ie new and/or baseline year</i> )	0	0%	0	0%	2	13%	1	14%	0	0%	3	8%
<b>Total Number of Indicators</b>		<b>2</b>		<b>9</b>		<b>13</b>		<b>5</b>		<b>3</b>		<b>32</b>	
<b>Total Number of Components</b>		<b>4</b>		<b>9</b>		<b>15</b>		<b>7</b>		<b>3</b>		<b>38</b>	

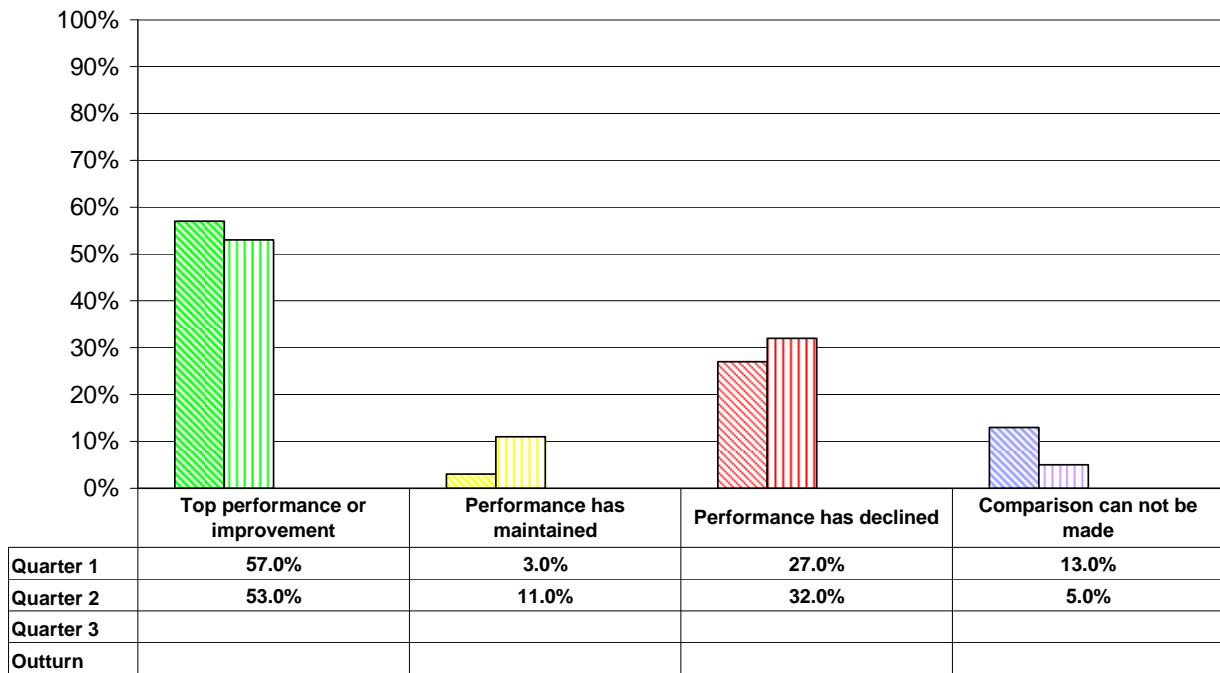
## Performance against Statistical Neighbours

Outturn Perf.	Interpretation	BH		SS		EA		MPC		AEW		All	
		No	%	No	%	No	%	No	%	No	%	No	%
★	2% above statistical neighbour or top performance	0	0%	7	78%	6	40%	0	0%	2	67%	15	39%
●	Same as statistical neighbour or above by less than 2%	1	25%	1	11%	1	7%	0	0%	1	33%	4	11%
▲	Below statistical neighbour	3	75%	1	11%	5	33%	3	43%	0	0%	12	32%
- / n/a	No statistical neighbour data to compare	0	0%	0	0%	3	20%	4	57%	0	0%	7	18%
<b>Total Number of Indicators</b>		<b>2</b>		<b>9</b>		<b>13</b>		<b>5</b>		<b>3</b>		<b>32</b>	
<b>Total Number of Components</b>		<b>4</b>		<b>9</b>		<b>15</b>		<b>7</b>		<b>3</b>		<b>38</b>	

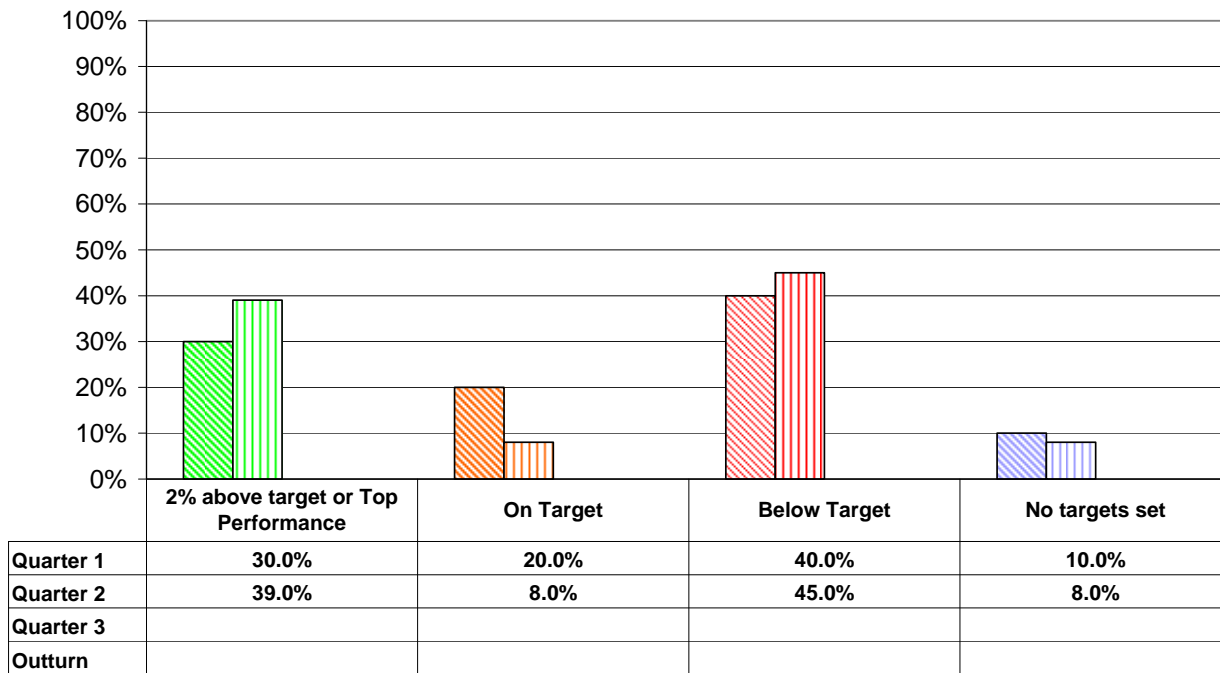
## Performance against National

Outturn Perf.	Interpretation	BH		SS		EA		MPC		AEW		All	
		No	%	No	%	No	%	No	%	No	%	No	%
★	2% above national or top performance	2	50%	8	89%	4	27%	0	0%	2	67%	16	42%
●	Same as national or above by less than 2%	0	0%	0	0%	2	13%	0	0%	0	0%	2	5%
▲	Below national	2	50%	1	11%	4	27%	2	29%	1	33%	10	26%
- / n/a	No national data to compare	0	0%	0	0%	5	33%	5	71%	0	0%	10	26%
<b>Total Number of Indicators</b>		<b>2</b>		<b>9</b>		<b>13</b>		<b>5</b>		<b>3</b>		<b>32</b>	
<b>Total Number of Components</b>		<b>4</b>		<b>9</b>		<b>15</b>		<b>7</b>		<b>3</b>		<b>38</b>	

**Progress Over Quarters 2010-11**  
**Direction of Travel - All Themes**



**Progress Over Quarters 2010-11**  
**Performance Year to Date - All Themes**



## Notes on overall performance

- Across all themes, 47% of the National Indicator components targets have been met. This is a 3% decrease from 50% in the 2010/11 quarter 1 report.
- There are 45% of all indicators which are not meeting targets which represents a 5% increase from 40% in quarter 1. The Enjoying and Achieving theme is particularly underperforming with 67% of indicators not meeting targets, although only three indicators components were collected and this has shown no movement from quarter 1. The Making a Positive Contribution theme has shown an increase in the number of indicators not meeting target, up from 25% in quarter 1 to 57% in quarter 2. Future targets are being reviewed with managers to ensure that they are appropriate and realistic, whilst continuing to drive improvement.
- Across all themes, 53% of the National Indicator components in Quarter 2 have shown improvement from quarter 1. This is particularly evident in the Enjoying and Achieving theme which shows 67% of components improving. Performance has declined in 32% of components in comparison with quarter 1 performance. This can be seen predominantly within the Being Healthy theme which shows 75% of components having a downwards direction of travel although this theme only has 4 indicator components.
- This quarter, the benchmarking data downloaded from the Local Area Interactive Tool shows that 47% of indicator components are inline or above the national average with only 26% being below. Comparison against statistical neighbours show that 50% of components are inline or above and 32% are below the statistical neighbour average.

## Areas of Success

### Being Healthy

- Coverage of breast-feeding at 6-8 wks from birth (No 2b / NI53b) continues to improve. A figure of 98.1% has been achieved in quarter 2 against a target of 95% and there has been an increase of 1.8% from quarter 1 which showed performance of 96.3%. This is 4.5% above the latest available national average of 93.6% and 1.2% above the latest available statistical neighbour average of 96.9%.

### Staying Safe

Three indicators are performing at least 2% or better above target and show a positive direction of travel. These are;

- Stability of placements of looked after children: number of placements (No 6 / NI62). Quarter 2 shows performance of 7.3% against a target of 10.5% and continues to improve quarterly up as performance at 2009/10 outturn was 11.1% and quarter 1 was 8.9%. The figure of 7.3% is above both statistical neighbour and national averages of 10.1% and 10.9% respectively.
- Percentage of child protection cases which were reviewed within required timescales (No10 / NI67) has maintained top performance of 100% and is above the statistical neighbour average of 96.7% and the national average of 97.2%.

- Percentage of referrals to children's social care going on to initial assessment (No 11 / NI68). This indicator has a quarter 2 figure of 81.7% against a target of 70% and shows improvement from the quarter 1 performance of 64.5%. This is significantly above both the statistical neighbour and national averages of 67.5% and 64.3% respectively.

### **Enjoying and Achieving**

- Achievement of at least 78 points across the Early Years Foundation Stage No 12 / NI72 has achieved an outturn figure of 56.2% against a target of 53%. This is an increase of 6.4% on 2009 performance against a national increase of 2%. Performance exceeds both the statistical neighbour and national averages of 49.9% and 52% respectively.
- Achievement of 2 or more A\*-C grades in science GCSEs or equivalent (No 17 / NI84). This indicator has a 2010 performance of 55.9% against a target of 52%. This shows an increase of 7.1% on 2009 performance and is above both statistical neighbour and national averages of 52.8% and 53.7%.
- Special Educational Needs – statements issued within 26 weeks (No 24 a & b / NI103 a & b) has maintained top performance (100%) in part a) excluding exceptions. This exceeds the target of 95% and is above the statistical neighbour average of 97.2% and the national average of 91%. Part b) including exceptions has also exceeded the target of 92% with a top performing Q1 figure of 100%. This is also above the statistical neighbour average of 94.4% and the national average of 82%.

### **Making a Positive Contribution**

- First time entrants to the Youth Justice System aged 10 – 17 (No 28 / NI111 a & b). The number of first time entrants (part a) for quarter 2 was 97 and number of first time entrants per 100,000 population (part b) was 365. Both of these components significantly exceed the targets of 514 and 1900 respectively. It must be noted however, that whilst these figures are good for this indicator they will have an adverse effect on other indicators, such as young people receiving a conviction who are sentenced to custody and young offenders engagement in suitable education, training and employment.

### **Achieving Economic Wellbeing**

- Care leavers in employment, education or training (No 32 / NI148) has a Q2 figure of 78.6% which is above the target of 67% although it shows a negative direction of travel from quarter 1 of 8.9%. This is still however, above both the statistical neighbour average of 56.9% and the national average of 62%.

## Areas of Under-Performance

### Being Healthy

- Take up of secondary school lunches (No 1 b / NI52 b). Quarter 2 performance of 32.3% is below the target of 34.2% and has a downward direction of travel against the quarter 1 figure of 33.1%. It must be noted however, that this was a seasonally difficult period and results are encouraging for annual performance to exceed the target.
- Prevalence of breast-feeding at 6-8 wks from birth (No 2a / NI53a) has a quarterly figure of 26.6% against a target of 32%. This has a downward direction of travel from quarter 1 figure of 28.7% and is below the statistical and national averages of 27.4% and 45.2% respectively.

### Staying Safe

- Percentage of initial assessments for children's social care carried out within 7 working days of referral (No 3 / NI59). Quarterly performance of 81.2% is below the target of 87% and shows a downward direction of travel from 84.1% in quarter 1. The dip in performance is primarily due to ongoing recruitment problems with social work posts having been offered but turned down. Performance for this indicator is however above both the statistical neighbour and national averages of 69.2% and 67.1%.
- Looked after children cases which were reviewed within required timescales (No 9 / NI66). Quarter 2 performance of 96.7% has dipped slightly below the target and quarter 1 figure, both of which were 97%. This is still however, above both the statistical neighbour average of 92% and the national average of 90.5%.

### Enjoying and Achieving

- Achievement at level 4 or above in both English and Maths at Key Stage 2 (No 13 / NI73) has a 2010 performance figure of 66.5%. This is below the target set of 79% and also shows a downward direction of travel from 2009 performance of 68%. Performance is still below both the statistical neighbour and national averages of 74.2% and 74% respectively.
- Progression by 2 levels in English between Key Stage 1 and Key Stage 2 (No 19 / NI93). The 2010 figure of 79% is significantly below the target of 94% and shows a slight downward direction of travel from 80% in 2009 and is also below both the statistical neighbour and national averages of 83.8% and 84%.

### Making a Positive Contribution

- Young people within the Youth Justice System receiving a conviction in court who are sentenced to custody (No 26 / NI43). This National Indicator performance of 7.9% does not meet the target of 5.0% and shows a downward direction of travel from 7.1% in the previous quarter. Performance is also worse than both the statistical neighbour average of 4.5% and the national average of 5.5%. Whilst custody figures are beginning to decline in real terms, ( 38 in 2009/10 as opposed to 46 in 2008/9), The rate of custody continues to be below target due to the success of reducing the number of first time entrants (NI 111) which continues to drop quarter on quarter.

- Young offenders' engagement in suitable education, training and employment (No 27 / NI45). This National Indicator performance of 56.6% does not meet the target of 78% and shows a downward direction of travel from the previous quarter performance of 68.2%. Performance is also worse than both the statistical neighbour average of 70.6% and the national average of 73.3%.

### Achieving Economic Wellbeing

- 16 to 18 year olds who are not in education, training or employment (No 30 / NI117). Although the quarter 2 figure of 7.7% has been maintained from the previous quarter, it is still not achieving the target set of 7.1%.

## Performance Clinics

At every quarter all indicators which are both 'off target' and have a 'downward Direction of Travel' are considered for clinics. Performance Management Officers review the data, comments and any discussions with PI managers to make informed recommendations. These are then approved or otherwise by CYPs Cabinet Member & Advisers. The Cabinet Member for Children and Young People's Services can also call clinics on particular issues of interest which are not monitored by National Indicators eg Foster Carers. Ad-hoc Performance Clinics, Turning the Curve workshops and additional internal challenge events have also been held on DLT request.

### Previous Clinics

**Topic:** Looked After Children's Attainment (NI's 99, 100 and 101)

**Clinic type:** Corporate Performance Clinic

#### Main issues discussed

- Overview of current performance.
- Work of the Get Real team to raise attainment, achievement and aspirations of children in care.
- Risk factors associated with LAC National Indicators.

#### Actions to be taken

The clinic agreed that there is a high amount of good and high quality work currently being undertaken to resolve the issues.

It was agreed that the following key actions will be undertaken;

- A report be produced every term to identify the schools that have looked after children as students.
- That the outcomes of the current review of placement of children outside the authority and any cost reductions achieved be reported to the performance clinic members.
- Regular reviews of children placed outside the authority should take place to ensure they are receiving a high level of care/support.
- Members will receive training sessions on this area, with more in depth training for Members who are involved with schools.



- **Future Clinics**

Below are recommendations for future performance clinics.

No.	Ref.	Indicator	Rationale
30	NI 117	16 to 18 year olds who are not in education, training or employment (NEET)	There is to be an internal review of this indicator deriving from a previous performance clinic

- **Additional targeted improvement and challenge work**

In addition to the above, the improvement panel action plan covers a series targets around Staying Safe, Enjoying and Achieving and Leadership. Topics include;

- Staying Safe
- Enjoying and Achieving
- Leadership and Management
- Performance Management
- Recruitment and Retention of Social Care staff
- Recent Inspection recommendations.